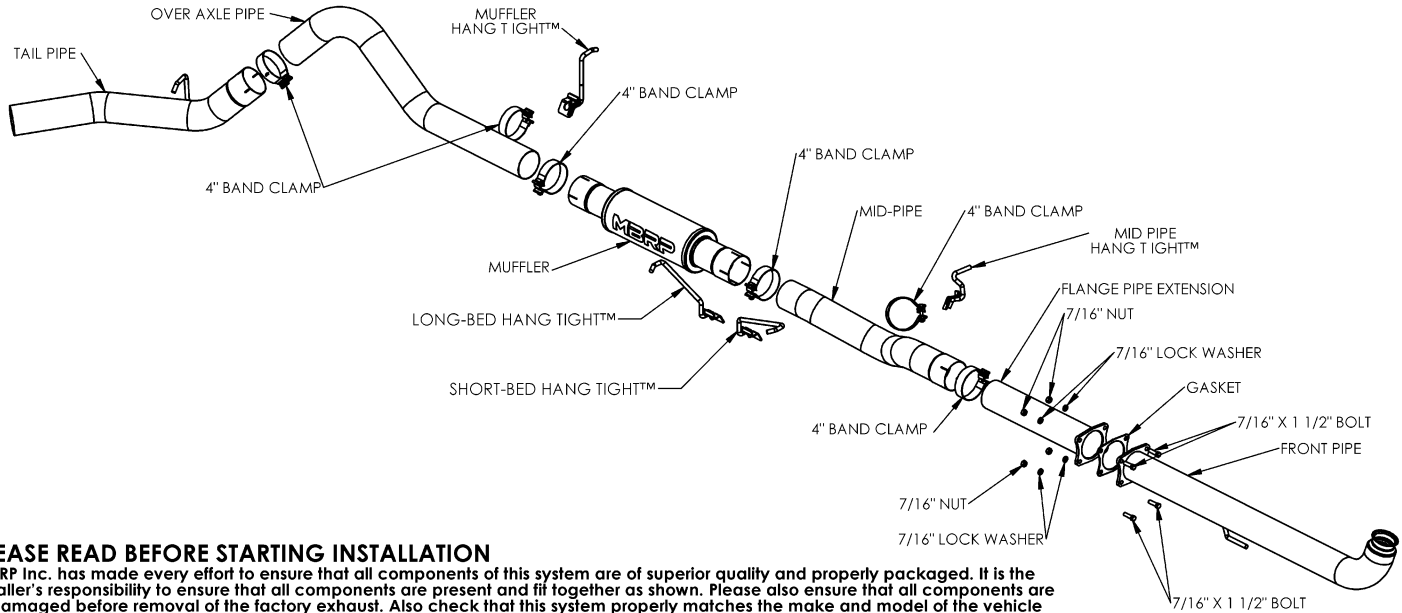


# S6005P

2001-2004 CHEV/GMC 2500/3500, EXTENDED CAB/CREW CAB, 6.6L DURAMAX,  
DOWNPIPE-BACK, 4" SINGLE SIDE, EXCLUDES 2002-2004 CALIFORNIA MODELS

# MBRP

12-AUG-22



### PLEASE READ BEFORE STARTING INSTALLATION

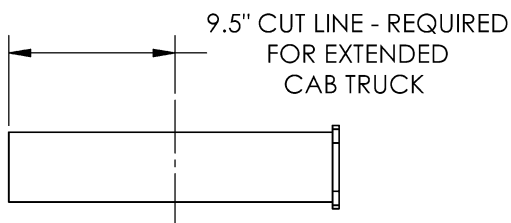
MBRP Inc. has made every effort to ensure that all components of this system are of superior quality and properly packaged. It is the installer's responsibility to ensure that all components are present and fit together as shown. Please also ensure that all components are undamaged before removal of the factory exhaust. Also check that this system properly matches the make and model of the vehicle and will not interfere with previous or planned modifications.

### Removal of Stock System:

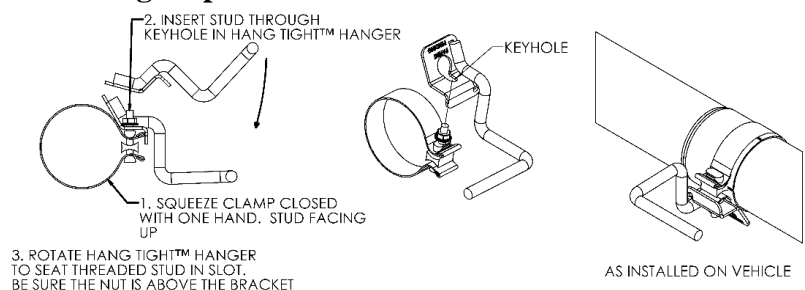
1. Apply penetrating lubricant liberally to all exhaust fasteners, hangers, and rubber insulators.
2. Disconnect the four-bolt flange located approximately under the passenger seat.
3. Remove the exhaust system from the rubber insulators and remove from under the vehicle. If a hoist is not available for use, it may be necessary to cut the tail pipe behind the muffler for removal of the system.
4. Loosen the factory v-band clamp and remove the stock front pipe. Do not discard the band clamp as it is required for the installation.

### Installation of MBRP Performance Exhaust:

1. Install the **Front Pipe** by sliding the hanger into the outside hole in the rubber insulator. (**Installation Tip:** With the **Front Pipe** bend rotated towards the right, slide it over the frame support member until it meets up to the factory downpipe.)
2. Using the factory v-band clamp connect the **Front Pipe** to the factory downpipe. Do not fully tighten to allow for adjustment.
3. Connect the **Flange Pipe Extension** with the **Gasket** to the **Front Pipe** using the **7/16" Bolts, Lock Washers** and **Nuts**; do not fully tighten to allow for adjustment.
4. The **Flange Pipe Extension** does not require cutting to fit Crew Cab trucks. For Extended Cab trucks, approximately 9 1/2" needs to be cut off the end of the **Flange Pipe Extension**. Refer to **Detail A**.

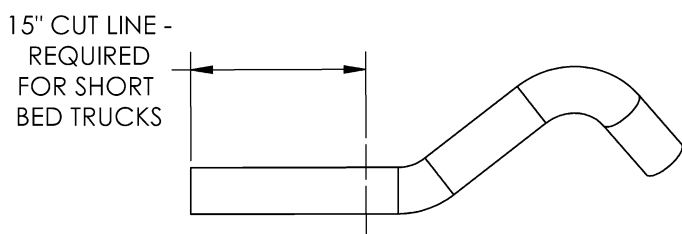


Detail A

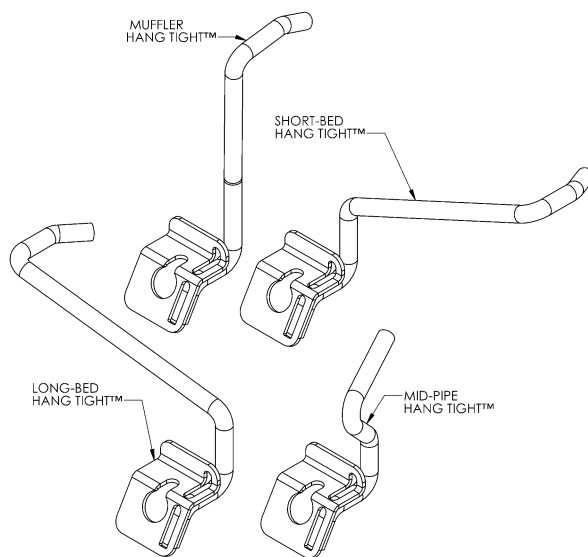


Detail B

- Position the **Mid-pipe** bend around & under the cross member. Rotate the pipe to position the bend toward the driveshaft.
- After positioning the **Mid-pipe** as shown, loosely install the **Mid-pipe Hang-Tight™**. this will support the **Flange Pipe Extension** during the **Muffler** installation. (See **Detail B** for Hang Tight instructions and **Detail C** for hanger clarification).
- Install the **Muffler** on the **Mid-pipe** using the correct Hang-Tight. Crew Cab & Extended Cab long box trucks require the **Long-bed Hang-Tight™**. Crew Cab & Extended Cab short box trucks require the **Short-bed Hang-Tight™** (see **Detail C** for hanger clarification).
- Crew Cab & Extended Cab short box trucks require 15" of the Over Axle Pipe to be cut. Note: cutting is NOT required with long box trucks. **See Detail D.**

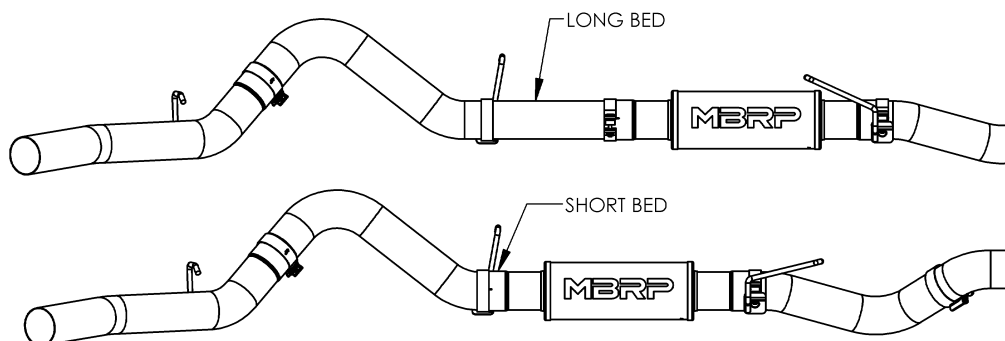


Detail D



Detail C

- For Short Bed trucks, use a **4" Band Clamp** and install the **Muffler Hang-Tight™** on the connection between the **Muffler** and the **Over-Axle Pipe**. For Long Bed trucks, use two **4" Band Clamps**; install one onto the **Muffler**, then install the **Muffler Hang-Tight™** to the clamp that is closer to the bend. Slide the hanger into the OEM rubber insulator at this position. **Refer to Detail E and Page 1.**



Detail E

- Slide the **4" Band Clamp** over the **Tail Pipe** and then install the **Tail Pipe** onto the **Over-Axle Pipe**. Slide the **Tail Pipe** hanger into the rear OEM hanger insulator, adjust for optimal axle clearances and **Tail Pipe** location.
- Carefully align the system. Align the edge of each band clamp with the edge of the joint it is connecting. Tighten all hardware and clamps, starting at the front and working rearward to secure the system. Check along the full length of the exhaust system to ensure there is adequate clearance for fuel lines, vent lines, brake lines, frame, bodywork, suspension, and any wiring, etc. If there is any interference detected, relocate, or adjust to provide adequate clearance. Ensure all clamp connections are secure and components are unable to rotate or slide. Band clamps require approximately 45 lb-ft (60 N-m) of torque. Verify clearances, system security and band clamp torque after 30-60 miles (50-100 km) of driving.

Congratulations! You are ready to begin experiencing the improved power, sound and driving experience of your

**MBRP** Performance Exhaust. We know you will enjoy your purchase!